

Class G

“Ground”

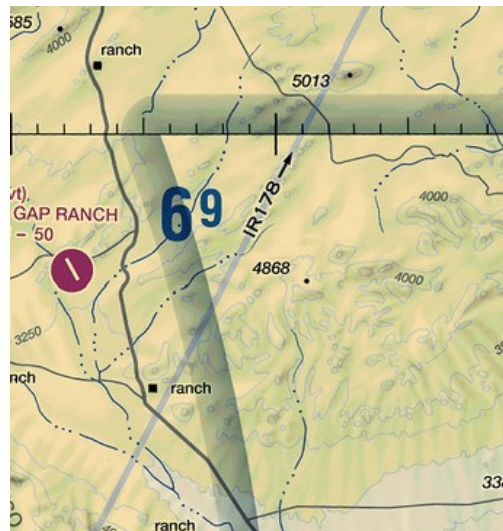
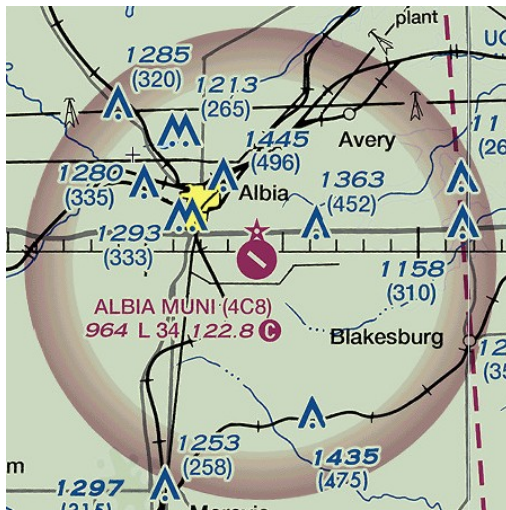
Depiction

Shaded magenta represents the class G goes from the surface to 700 ft AGL

Shaded blue represents the class G ends at 1,200ft AGL (most of the US).

Sawtooth blue line is for special class G altitudes.

Everything else, the class G ends at 14,500ft MSL.



Altitudes

From the ground to base of the class E above it (typically 1,200ft AGL)

Requirements

Altitude	Type of Airspace	Flight Visibility	Cloud Clearance
1,200 AGL or higher	G (night)	3 statute miles	152 → 500 below → 1,000 above → 2,000 horizontal
	G (day)	1 statute mile	152 → 500 below → 1,000 above → 2,000 horizontal
Below 1,200 AGL	G (night)	3 statute miles	152 → 500 below → 1,000 above → 2,000 horizontal
	G (day)	1 statute mile	Clear of clouds

Class E

“Everywhere”

Depiction

Dashed magenta represents the class E begins at the surface.



Altitudes

Typically 700ft AGL or 1,200ft AGL to 18,000ft MSL. Also 60,000ft MSL and above.

Requirements

Over 10,000ft MSL or 2,500 ft AGL, whichever comes last: Transponder, ADS-B out

Altitude	Type of Airspace	Flight Visibility	Cloud Clearance
10,000 MSL	E	5 statute miles	111 → 1,000 below, → 1,000 above, → 1 sm horizontal
Below 10,000 MSL	C	3 statute miles	152 → 500 below → 1,000 above → 2,000 horizontal
	D		
	E		

Class D

Depiction

Dashed blue lines



Altitudes

Typically surface to 2,500 AGL

Minus prefix is exclusive altitude

Requirements

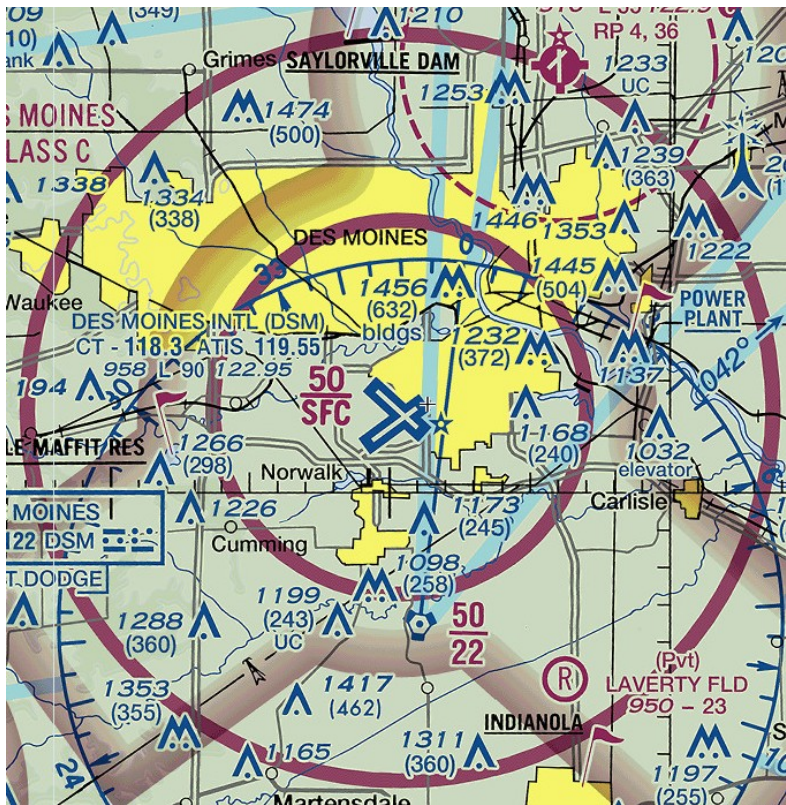
Altitude	Type of Airspace	Flight Visibility	Cloud Clearance
Below 10,000 MSL	C	3 statute miles	152
	D		→ 500 below
	E		→ 1,000 above → 2,000 horizontal

Radio, ATC must acknowledge callsign to enter.

Class C

Depiction

Solid magenta lines



Altitudes

Typically surface to 4,000ft AGL. Forms a stair-step shape that can be flown under.

T means ceiling is to but not including floor of class B

Requirements

Altitude	Type of Airspace	Flight Visibility	Cloud Clearance
Below 10,000 MSL	C	3 statute miles	152 → 500 below → 1,000 above → 2,000 horizontal
	D		
	E		

ADS-B out from surface up to 10,000ft MSL

Radio, transponder

ATC must acknowledge callsign to enter.

Class B

Depiction

Solid blue lines



Altitudes

Typically surface to 10,000ft MSL. Forms a stair-step shape that can be flown under.

Requirements

Altitude	Type of Airspace	Flight Visibility	Cloud Clearance
Below 10,000 MSL	B	3 statute miles	Clear of clouds

ADS-B out within 30NM and from surface up to 10,000 ft MSL.

Radio, transponder.

ATC clearance required to enter.

Class A

Depiction

None

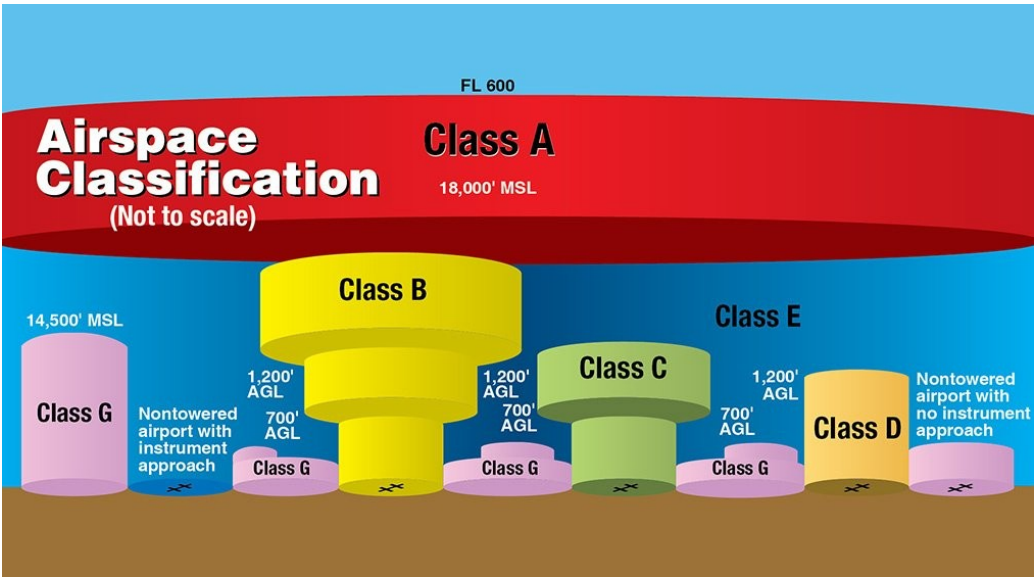
Altitudes

18,000ft MSL to 60,000ft MSL (FL600)

Requirements

IFR rules

Diagrams



Wilderness Area

2000 ft AGL above

